

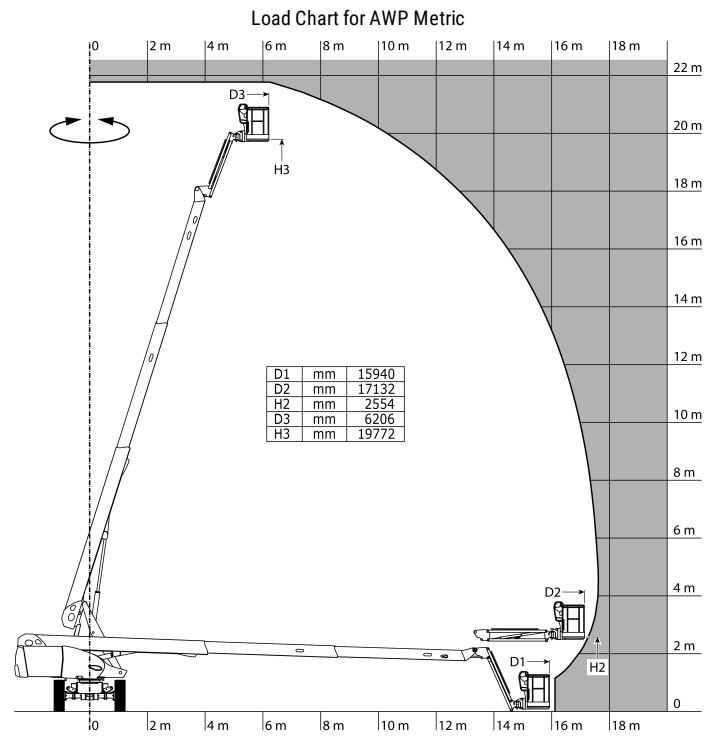
Technical sheet :

220 TJ-X

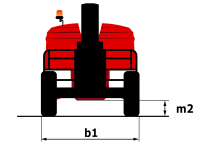
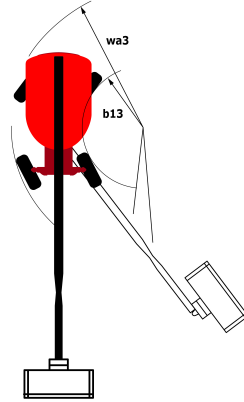
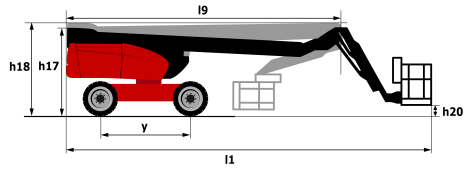


Capacities		Metric
Working height	h21	21.77 m
Platform height	h7	19.77 m
Max. outreach	r1	17.63 m
Pendular arm rotation (bottom)		+66 °
Platform capacity	Q	230 kg
Turret rotation		360 °
Platform rotation (right / left)		90 ° / 90 °
Number of people (inside / outside)		2 / 2
Weight and dimensions		
Platform weight*		11850 kg
Platform dimensions (length x width)	lp / ep	2.10 m x 0.80 m
Overall width	b1	2.48 m
Overall length	l1	9.80 m
Overall height	h17	2.47 m
Overall length (stowed)	l9	7.29 m
Overall height (stowed)	h18	2.72 m
Floor height (access)	h20	0.39 m
Jib length	l13	2 m
Counterweight offset (turret at 90°)	a7	1.34 m
Internal turning radius (over tyres)	b13	2.96 m
External turning radius	Wa3	6.19 m
Ground clearance	m4	0.44 m
Ground clearance at centre of wheelbase	m2	0.44 m
Wheelbase	y	2.80 m
Performances		
Drive speed - stowed		4.80 km/h
Drive speed - raised		1 km/h
Gradeability		40 %
Permissible leveling		4 °
Wheels		
Tyres type		Solid Tyres Cured-On
Drive wheels (front / rear)		2 / 2
Steering wheels (front / rear)		2 / 0
Braking wheels (front / rear)		0 / 2
Engine/Battery		
Engine brand / model		Kubota - V1505.E3B
Engine norm		Stage IIIA
I.C. Engine power rating / Power (kW)		35 Hp / 26.20 kW
Miscellaneous		
Ground Pressure		18.20 daN/cm²
Hydraulic Pressure		340 Bar
Hydraulic tank capacity		94 l
Fuel tank		72 l
Vibration on hands/arms		< 0 m/s²
Daily consumption **		7.72 l
Standards compliance		
This machine is in compliance with:		European directives: 2006/42/EC- Machinery (revised EN280:2013) - 2004/108/EC (EMC) - 2006/95/EC (Low voltage)

Load chart



Dimensional drawing



Equipment

Standard

230V Predisposition

4 simultaneous movements

4 wheel drive

Audible alarm and illuminated indicator lamp (leveling, overload, lowering)

Backup electrical pump

Continuous turret rotation

Crab mode

Differential locking on rear axle

Easy Manager

Electronic platform compensation

Emergency stop button in platform and on frame

Engine mounted on sliding platform

Flashing Light

Front axle with limited slip

Fuel gauge with low level indicator

Fully galvanized basket with demountable floor

Hour meter

Integrated diagnostic assistance

Leveling unlocking

Management via engine speed bearing

Oscillating front axle

Proportional controls

Protective cover for control panel

Optional

110 or 230V plug with differential circuit breaker

Access control keypad for easy link

Air predisposition

Basket 1,800 mm

Battery cut-off

Beep upon travel

Biodegradable oil

Exhaust purifier

Extreme cold oil

Indicator light (when turret is over 90°)

Key lock on fuel tank

Onboard generator (3,5 or 5 kW)

Personalized paintwork

Remote control for transport

SMS : Safe Man System

Safety harness

Screen protection on the lower box control

Spark arrester

Working light



Siège Social

430 rue de l'Aubinière - 44150 Ancenis Cedex - France

Tel: +33(0)2 40 09 10 11 - Fax: +33 (0)2 40 09 10 97

www.manitou.com



This brochure describes versions and configuration options for Manitou products which may be fitted with different equipment. The equipment described in this brochure may be standard, optional or not available depending on version. Manitou reserves the right to change the specifications shown and described at any time and without prior warning. The manufacturer is not liable for the specifications given. For more information, contact your Manitou dealer. Non-contractual document. Product descriptions may differ from actual products. List of specifications is not comprehensive. The logos and visual identity of the company are the property of Manitou and may not be used without authorisation. All rights reserved. The photos and diagrams contained in this brochure are provided for information only.

MANITOU BF SA - Limited company with board of directors - Share capital: 39,668,399 euros - 857 802 508 RCS Nantes