

Technical sheet :

# **260 TJ-XP**

---

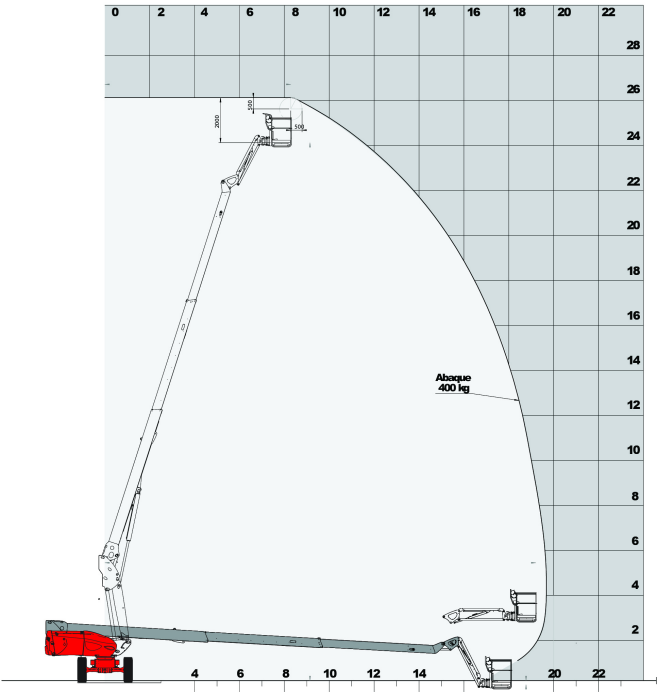


Capacities		Metric
Working height	h21	25.89 m
Platform height	h7	23.89 m
Max. outreach	r1	19.70 m
Pendular arm rotation (bottom)		+63 °
Platform capacity	Q	400 kg
Turret rotation		360 °
Platform rotation (right / left)		90 ° / 90 °
Number of people (inside / outside)		3 / 3
Weight and dimensions		
Platform weight*		16480 kg
Platform dimensions (length x width)	lp / ep	2.30 m x 0.90 m
Overall width	b1	2.48 m
Overall length	l1	10.84 m
Overall height	h17	2.80 m
Overall length (stowed)	l9	7.88 m
Overall height (stowed)	h18	2.80 m
Floor height (access)	h20	0.48 m
Counterweight offset (turret at 90°)	a7	1.42 m
Internal turning radius (over tyres)	b13	1.75 m
Ground clearance	m4	0.41 m
Ground clearance at centre of wheelbase	m2	0.41 m
Wheelbase	y	2.71 mm
Performances		
Drive speed - stowed		4.50 km/h
Drive speed - raised		0.80 km/h
Gradeability		35 %
Permissible leveling		4 °
Wheels		
Tyres type		Solid Tyres Cured-On
Drive wheels (front / rear)		2 / 2
Steering wheels (front / rear)		2 / 2
Braking wheels (front / rear)		2 / 2
Engine/Battery		
Engine brand / model		Kubota - V2403-M
Engine nom		Stage IIIA
I.C. Engine power rating / Power (kW)		46 Hp / 34.10 kW
Miscellaneous		
Ground Pressure		21.30 daN/cm²
Hydraulic Pressure		250 Bar
Hydraulic tank capacity		94 l
Fuel tank		72 l
Noise to environment (LwA)		< 106 dB(A)
Vibration on hands/arms		< 0 m/s²
Daily consumption **		10.50 l
Standards compliance		
This machine is in compliance with:		European directives: 2006/42/EC- Machinery (revised EN280:2013) - 2004/108/EC (EMC) - 2006/95/EC (Low voltage)

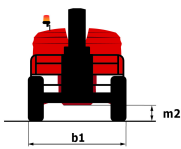
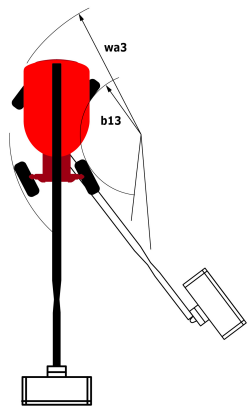
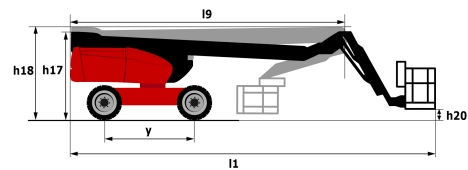
\*\* According to "REDUCE cycle"

# Load chart

Load Chart metric



# Dimensional drawing



# Equipment

## Standard

230V Predisposition  
 4 simultaneous movements  
 4 wheel drive  
 4 wheel steer with crab mode  
 Audible alarm and illuminated indicator lamp (leveling, overload, lowering)  
 Backup electrical pump  
 Continuous turret rotation  
 Differential locking on rear axle  
 Easy Manager  
 Electronic platform compensation  
 Emergency stop button in platform and on frame  
 Engine mounted on sliding platform  
 Fuel gauge with low level indicator  
 Hour meter  
 Integrated diagnostic assistance  
 Large basket with three entries  
 Leveling unlocking  
 Operator presence pedal  
 Oscillating front axle  
 Rear axle with limited slip differential  
 Remote control for transport  
 Turret orientation information

## Optional

110 or 230V plug with differential circuit breaker  
 Access control keypad for easy link  
 Additional storage boxes  
 Air predisposition  
 Basket 1,800 mm  
 Battery cut-off  
 Beep on every movement  
 Beep upon travel  
 Biodegradable oil  
 Catalytic cleaner  
 Extreme cold oil  
 Key lock on fuel tank  
 Onboard generator (3,5 or 5 kW)  
 Panel support kit  
 SMS : Safe Man System  
 Safety harness  
 Spark arrester  
 Tube support kit  
 Working light



Siège Social

430 rue de l'Aubinière - 44150 Ancenis Cedex - France

Tel: +33(0)2 40 09 10 11 - Fax: +33 (0)2 40 09 10 97

[www.manitou.com](http://www.manitou.com)



This brochure describes versions and configuration options for Manitou products which may be fitted with different equipment. The equipment described in this brochure may be standard, optional or not available depending on version. Manitou reserves the right to change the specifications shown and described at any time and without prior warning. The manufacturer is not liable for the specifications given. For more information, contact your Manitou dealer. Non-contractual document. Product descriptions may differ from actual products. List of specifications is not comprehensive. The logos and visual identity of the company are the property of Manitou and may not be used without authorisation. All rights reserved. The photos and diagrams contained in this brochure are provided for information only.

MANITOU BF SA - Limited company with board of directors - Share capital: 39,668,399 euros - 857 802 508 RCS Nantes