

Technical sheet :

260 TJ+

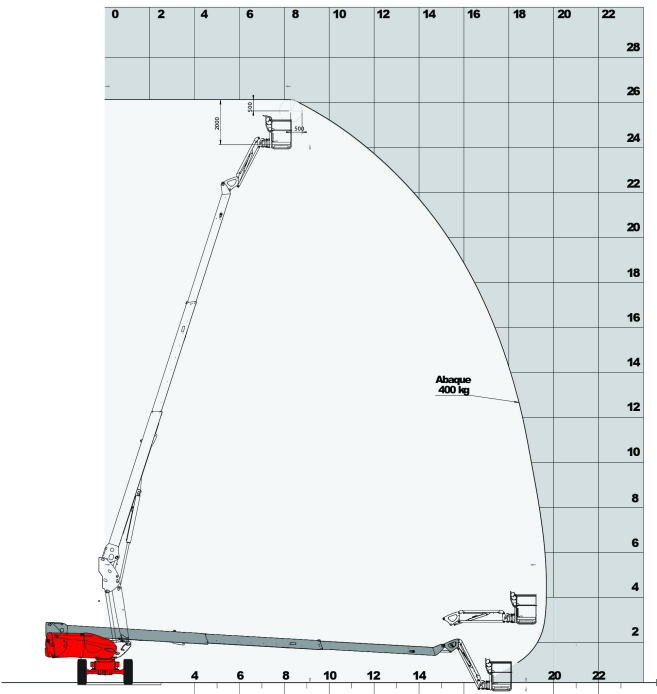


Capacities		Metric
Working height	h21	25.89 m
Platform height	h7	23.89 m
Max. outreach	r1	19.70 m
Pendular arm rotation (bottom)		+63 °
Platform capacity	Q	400 kg
Turret rotation		360 °
Platform rotation (right / left)		90 ° / 90 °
Number of people (inside / outside)		3 / 3
Weight and dimensions		
Platform weight*		16380 kg
Platform dimensions (length x width)	lp / ep	2.30 m x 0.90 m
Overall width	b1	2.48 m
Overall length	l1	10.84 m
Overall height	h17	2.80 m
Overall length (stowed)	l9	7.88 m
Overall height (stowed)	h18	2.80 m
Floor height (access)	h20	0.48 m
Counterweight offset (turret at 90°)	a7	1.42 m
Internal turning radius (over tyres)	b13	1.75 m
External turning radius	Wa3	6.84 m
Ground clearance	m4	0.41 m
Ground clearance at centre of wheelbase	m2	0.41 m
Wheelbase	y	2.71 m
Performances		
Drive speed - stowed		4.50 km/h
Drive speed - raised		0.80 km/h
Gradeability		35 %
Permissible leveling		4 °
Wheels		
Tyres type		Solid Tyres Cured-On
Drive wheels (front / rear)		2 / 2
Steering wheels (front / rear)		2 / 2
Braking wheels (front / rear)		2 / 2
Engine/Battery		
Engine brand / model		Kubota - V2403-M
Engine norm		Stage IIIA
I.C. Engine power rating / Power (kW)		45 Hp / 34.10 kW
Miscellaneous		
Ground Pressure		21.30 daN/cm²
Hydraulic Pressure		250 Bar
Hydraulic tank capacity		94 l
Fuel tank		72 l
Vibration on hands/arms		< 0.50 m/s²
Daily consumption **		10.50 l
Standards compliance		
This machine is in compliance with:		European directives: 2006/42/EC- Machinery (revised EN280:2013) - 2004/108/EC (EMC) - 2006/95/EC (Low voltage)

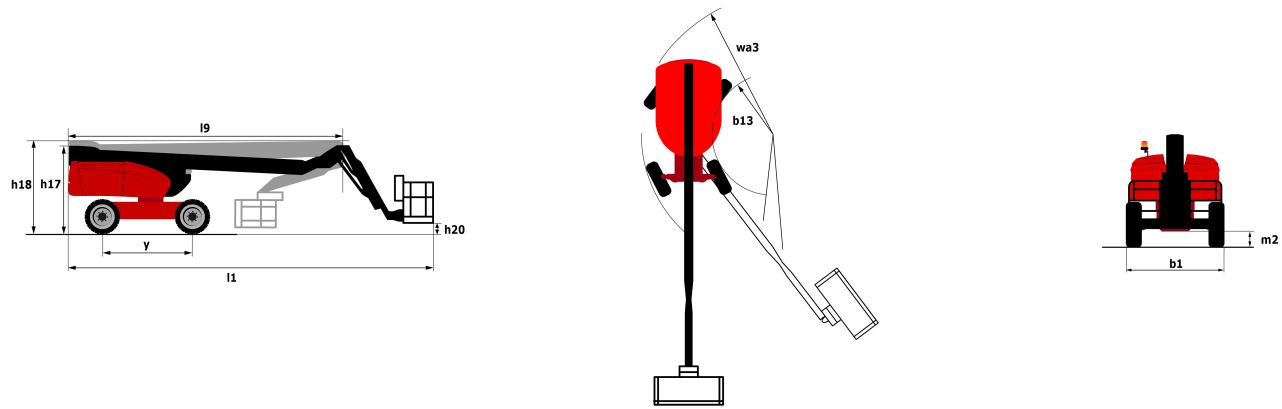
** According to "REDUCE cycle"

Load chart

Load Chart for AWP Metric



Dimensional drawing



Equipment

Standard

230V Predisposition
 4 simultaneous movements
 4 wheel drive
 4 wheel steer with crab mode
 Audible alarm and illuminated indicator lamp (leveling, overload, lowering)
 Backup electrical pump
 Continuous turret rotation
 Differential locking on rear axle
 Easy Manager
 Electronic platform compensation
 Emergency stop button in platform and on frame
 Engine mounted on sliding platform
 Fuel gauge with low level indicator
 Hour meter
 Integrated diagnostic assistance
 Large basket with three entries
 Operator presence pedal
 Oscillating front axle
 Rear axle with limited slip differential
 Remote control for transport

Optional

110 or 230V plug with differential circuit breaker
 Access control keypad for easy link
 Additional storage boxes
 Air predisposition
 Basket 1,800 mm
 Battery charger
 Battery cut-off
 Beep on every movement
 Beep upon travel
 Biodegradable oil
 Catalytic cleaner
 Extreme cold oil
 Key lock on fuel tank
 Onboard generator (3,5 or 5 kW)
 Panel support kit
 SMS : Safe Man System
 Safety harness
 Spark arrester
 Tube support kit
 Working light



Siège Social

430 rue de l'Aubinière - 44150 Ancenis Cedex - France

Tel: +33(0)2 40 09 10 11 - Fax: +33 (0)2 40 09 10 97

www.manitou.com



This brochure describes versions and configuration options for Manitou products which may be fitted with different equipment. The equipment described in this brochure may be standard, optional or not available depending on version. Manitou reserves the right to change the specifications shown and described at any time and without prior warning. The manufacturer is not liable for the specifications given. For more information, contact your Manitou dealer. Non-contractual document. Product descriptions may differ from actual products. List of specifications is not comprehensive. The logos and visual identity of the company are the property of Manitou and may not be used without authorisation. All rights reserved. The photos and diagrams contained in this brochure are provided for information only.

MANITOU BF SA - Limited company with board of directors - Share capital: 39,668,399 euros - 857 802 508 RCS Nantes