

Technical sheet :

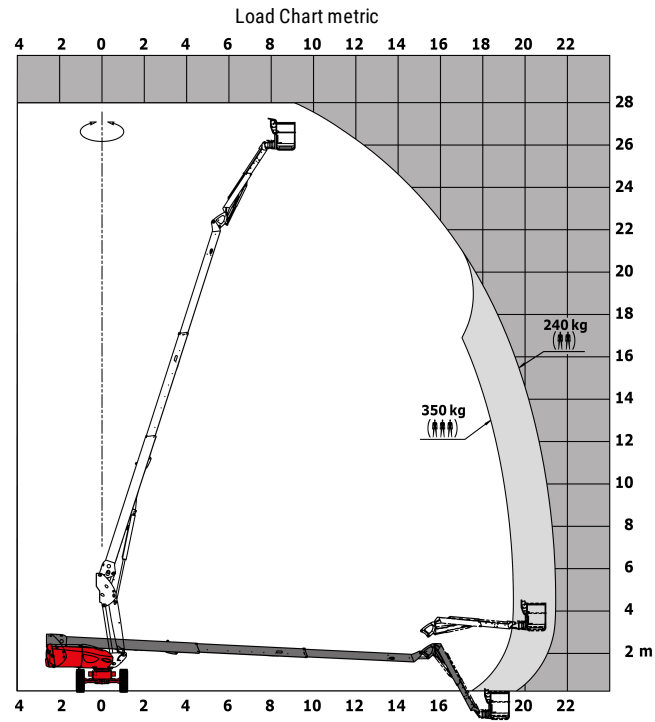
280 TJ-X



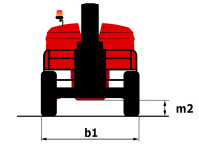
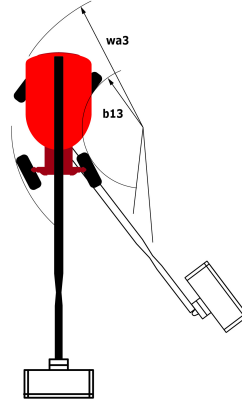
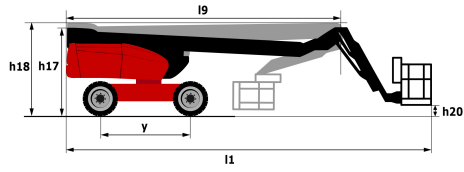
Capacities		Metric
Working height	h21	27.75 m
Max. outreach	r1	21.45 m
Pendular arm rotation (bottom)		+62 °
Platform capacity	Q	350 kg
Turret rotation		360 °
Platform rotation (right / left)		90 ° / 90 °
Number of people (inside / outside)		3 / 2
Weight and dimensions		
Platform weight*		16650 kg
Platform dimensions (length x width)	lp / ep	2.30 m x 2.30 m
Overall width	b1	2.48 m
Overall length	l1	11.36 m
Overall height	h17	2.75 m
Overall length (stowed)	l9	8.04 m
Overall height (stowed)	h18	2.71 m
Floor height (access)	h20	0.48 m
Internal turning radius (over tyres)	b13	1.75 m
Ground clearance	m4	0.41 m
Ground clearance at centre of wheelbase	m2	0.41 m
Wheelbase	y	2.80 mm
Performances		
Drive speed - stowed		4.70 km/h
Drive speed - raised		0.80 km/h
Gradeability		34 %
Permissible leveling		4 °
Wheels		
Drive wheels (front / rear)		2 / 2
Braking wheels (front / rear)		2 / 2
Engine/Battery		
Engine brand / model		Kubota - V2403-M
I.C. Engine power rating / Power (kW)		46 Hp / 34.10 kW
Miscellaneous		
Ground Pressure		22.25 daN/cm²
Hydraulic Pressure		250 Bar
Fuel tank		72 l
Vibration on hands/arms		< 0 m/s²
Daily consumption **		10.81 l
Standards compliance		
This machine is in compliance with:		European directives: 2006/42/EC- Machinery (revised EN280:2013) - 2004/108/EC (EMC) - 2006/95/EC (Low voltage)

** According to "REDUCE cycle"

Load chart



Dimensional drawing



Equipment

Standard

20" tyres
 230V Predisposition
 4 simultaneous movements
 4 wheel drive
 4 wheel steer with crab mode
 Audible alarm and illuminated indicator lamp (leveling, overload, lowering)
 Backup electrical pump
 Basket 2,300 mm
 CAN bus technology
 Continuous turret rotation
 Dead man pedal
 Differential locking on rear axle
 Electronic platform compensation
 Emergency stop button in platform and on frame
 Engine on swivel chair
 Front axle with limited slip
 Fuel gauge with low level indicator
 Hom in the platform
 Integrated diagnostic assistance
 Oscillating front axle

Optional

110 or 230V plug with differential circuit breaker
 Additional storage boxes
 Air predisposition
 Basket 1,800 mm
 Beep on every movement
 Beep upon travel
 Biodegradable oil
 Catalytic cleaner
 Coded anti-start
 Extreme cold oil
 Highly capacity battery
 Lockable fuel cap
 Non-marking tyres
 Onboard generator (3,5 or 5 kW)
 Refinery kit
 SMS : Safe Man System
 Safety harness
 Screen protection on the lower box control
 Turret cover with key lock
 Water predisposition



Siège Social

430 rue de l'Aubinière - 44150 Ancenis Cedex - France

Tel: +33(0)2 40 09 10 11 - Fax: +33 (0)2 40 09 10 97

www.manitou.com



This brochure describes versions and configuration options for Manitou products which may be fitted with different equipment. The equipment described in this brochure may be standard, optional or not available depending on version. Manitou reserves the right to change the specifications shown and described at any time and without prior warning. The manufacturer is not liable for the specifications given. For more information, contact your Manitou dealer. Non-contractual document. Product descriptions may differ from actual products. List of specifications is not comprehensive. The logos and visual identity of the company are the property of Manitou and may not be used without authorisation. All rights reserved. The photos and diagrams contained in this brochure are provided for information only.

MANITOU BF SA - Limited company with board of directors - Share capital: 39,668,399 euros - 857 802 508 RCS Nantes