

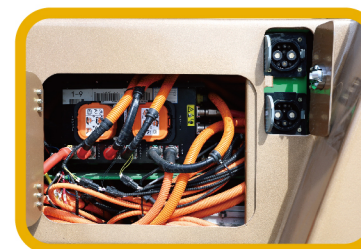


IP67

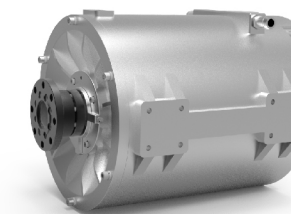
The waterproof grade is up to IP67, which can meet the harsh working conditions such as rainy days, and ensure easy cleaning.



Low cost of using: Electric forklifts fuel consumption are only about 30% of traditional internal combustion forklift.



International standard dual charging interface, can meet fast charging and steady current charging; a variety of charging station specifications are optional.

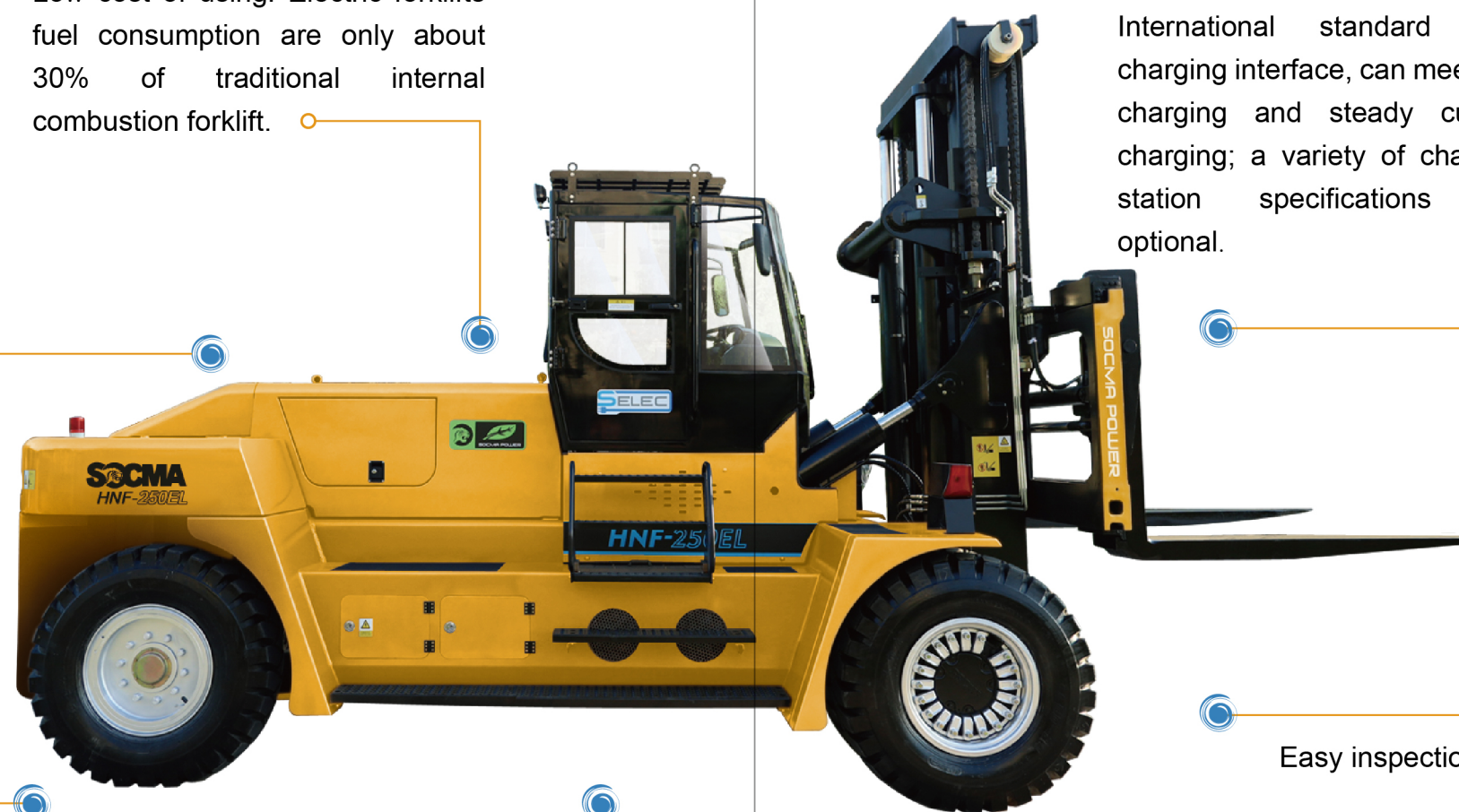


Using permanent magnet synchronous motors, coupled with multiple motors coordinated control technique, which ensure reasonable load matching, and optimized energy management.



ZERO EMISSION

Zero emissions, zero pollution, low noise.



Easy inspection and maintenance. Low maintenance cost.



Adopt large-capacity and high-energy density LFP battery which ensure long working time as more than 8 hours after full charged. The battery can be recharged more than 4000 cycles and can be used for more than 8 years.

Adopting high-voltage system design, which provides strong power. Full-load running speed, increase speed, gradeability are greatly improved compared with internal-combustion forklift.



ITEM		UNIT	HNF120-EL	HNF160-EL	HNF200-EL	HNF250-EL
Features	Rated Load	Q (t)	12	16	20	25
	Load center	c (mm)	600	900	1250	1250
	Wheelbase	y (mm)	3000	3800	4000	4400
Weight	Weight	kg	18000	25000	32500	35000
	Tyre Specs.:Front		10.00-20-18PR	12.00-24-18PR	14.00-24-28PR	14.00-24-28PR
	Tyres Qty,front/rear(X-drive wheels)		4\2	4\2	4\2	4\2
	Wheel tread:Front	b10 (mm)	1650	2060	2200	2200
	Wheel tread:Rear	b11 (mm)	1970	2330	2390	2390
Dimension	Mast\carriage tilt angle(front/rear)	Degree (°)	6\12	6\12	6\12	6\12
	Mast height(fork lowering)	h1 (mm)	3100	3625	3860	3860
	Mast lifting height	h3 (mm)	3000	3500	3500	3500
	Max.lifting height	h4 (mm)	4600	5375	5610	5610
	Height to head guard(height to cab)	h6 (mm)	3000	3365	3510	3510
	Overall length(with forks)	l1 (mm)	6055	7640	8340	9190
	Overall width	b1\b2 (mm)	2250	2750	3050	3050
	Fork dimension	s\l (mm)	1200X180X90	1800X220X100	2000X260X100	2440X300X110
	Min.Turning radius	Wa (mm)	4450	5800	6250	6700
	Travel speed(with load/without load)	km/h	23/26	26/30	26/30	25/29
Performance	Max.lifting speed(with load/without load)	mm/s	220/270	250/260	260/270	260/270
	Max.Lowering speed(with load/without load)	mm/s	450/300	430/330	310/260	315/260
	Traction	kN	90	150	170	170
	Gradeability(with load/without load)	%	20/22	20/21	20/22	20/21
	Driving brake		Hydraulic clamp disc	Hydraulic clamp disc	Hydraulic clamp disc	Hydraulic clamp disc
Power Consumption Rate		kwh	15	20	24	28
Power Reserves		kwh	141	175	240	282
Rated Voltage			618	600	531	618
Working Hour			8-10	8-10	8-10	8-10
Power of Travel Motor		kW	80	80	100	120
Power of hudraulic pump motor		kW	50	50	90	90

Fujian SouthChina Heavy Machinery Manufacture Co.,Ltd

TEL: +86-592-5650786

 E-mail: overseas@socmachinery.com

Web.: www.socmachinery.com

Distributor

HNF120-EL

HNF160-EL

HNF200-EL

HNF250-EL



Electric Forklift Truck



- Easy-Operation
- Economical
- Powerful
- Safety



SOCMA has passed ISO9001 quality system certification